

Products >> Lags for Rag Tearing (Waste Recycling)

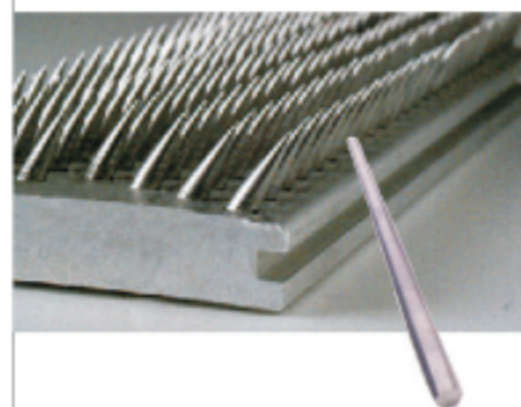
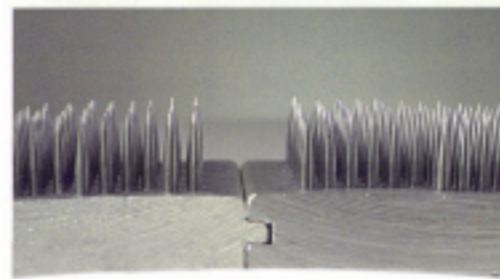
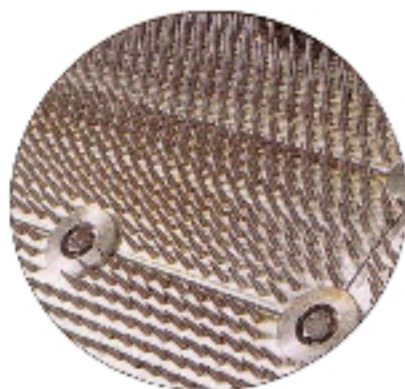
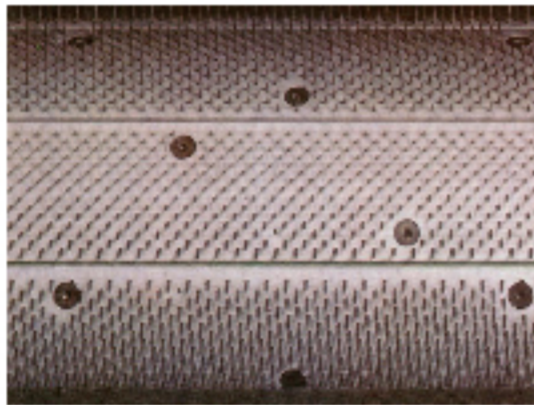


ALUMINIUM LAGS



Common Machine Types are LAROCHE, DELLOROCO & VILLANI, SCHIRP, ROLANDO, MARGASA, AUTEFA etc.

- Aircraft grade of Aluminium alloy used to take heavy load during tearing
- Range of pins diameters from 2mm to 8 mm fitted in vertical or inclined position depending on the stage of tearing.
- Inter locked or Plain Fit Profile .
- Steel quality, Heat Treatment and Pin Profile for long life and steady Pulling Ability.



WOODEN LAGS

Common Machines are ROLANDO,DELLOROCO & VILLANI,OCTIR,SCHIRP ,RAMELLA etc.

- Consists of High Density Laminated Wood which prevents pin come off.
- The Density of the Wood varies from 1.2 to 0.9 depending upto the stage of Tearing.
- The Steel used and special Heat Treatment of pins provides for long life and steady Pulling Ability of the Lags.
- Flat and Round Pins in all sizes are also supplied separately.

